

XV2-2T Wi-Fi 6 Outdoor Access Point

802.11ax dual-radio, 2x2

QUICK LOOK:

- **Dual radio 802.11ax**
- **2.5 GbE Uplink Ethernet**
- **1 GbE with power out**
- **Outdoor IP67 rated, -40°C to 65°C**

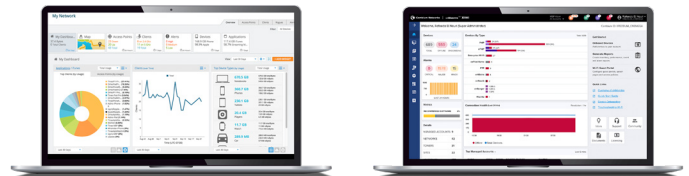


OUTDOOR WI-FI 6 DESIGNED FOR GREATER RANGE AND SPEED

The XV2-2T is a dual radio Wi-Fi 6 access point (AP) designed for outdoor deployments in Wi-Fi hotspots, outdoor enterprise networks, hospitality, and education markets. The XV2 2T features surge suppression up to 4kV and an LTE co-existence filter.

The XV2-2T delivers Cambium 30VDC power out, or 48VDC for PoE devices connected to the second gigabit Ethernet port. Ideal for connecting the XV2-2T to a Cambium subscriber module (SM), Terragraph CN (connection node), or any IP and Ethernet device such as a security IP camera, or another Wi-Fi access point.

The new IEEE 802.11ax standard delivers higher network speeds and enables more connected devices at higher packet quality. In outdoor deployments, the IEEE 802.11ax standard delivers greater range by boosting the RF frame preamble by 3dB and improved signal quality with increased guard interval vs previous Wi-Fi technology. The XV2-2T is fully backward compatible with existing Wi-Fi technology and prepares a network for higher growth and greater density of Wi-Fi connected devices.



CLOUD OR ON-PREMISES MANAGEMENT

XV2-2T continues the enterprise network convergence with edge-intelligent AP managed by application-intelligent Cambium Networks XMS or cnMaestro™ management system. Choose the management system that best fits your business and use the latest technology from Cambium Networks.

XV2-2T Wi-Fi 6 Outdoor Access Point

Access Point Specifications

Note: Some features will be included on subsequent firmware releases.

FCC Ch 1–11, 36–48, 52–64, 100–144, 149–165

ISED Ch 1–11, 36–48, 52–64, 100–144, 149–165

ETSI Ch 1–13, 36–48, 52–64, 100–144

ROW (Individual country limits may apply)

Ch 1–14, 36–48, 52–64, 100–144, 149–177

2400–2483.5 MHz, 5150–5895 MHz

Radios **5 GHz** 802.11 a/n/ac Wave 2/ax, 2x2
 2.4 GHz 802.11 b/g/n/ax, 2x2
 BLE 4.1

Wi-Fi 802.11 a/b/g/n/ac Wave 2/ax

SSID Security WPA3, WPA2 (CCMP, AES, 802.11i), WPA2 Enterprise (802.1x/EAP), WPA PSK (TKIP), Open

Max PHY Rate **5 GHz radio** 1,201 Mbps
 2.4 GHz radio 573.5Mbps

Ports 1 x IEEE 100/1000/2500 Mbps
 1 x IEEE 10/100/1000 Mbps Ethernet with SW configurable passive PoE output of 30V or 48V up to 30 Watts

Antenna **5 GHz** 9.3 dBi, Omni
 2.4 GHz 5.3 dBi, Omni

Max EIRP **5 GHz** 36 dBm
 2.4 GHz 33 dBm
 EIRP may be limited by country regulations

LTE Filter Band 38, 40

Power 20W max
 Up to 50W when powering an auxiliary device

Dimensions 582 mm x 200 mm x 80 mm
 (22.91 in x 7.87 in x 3.15 in)

Weight 1,200 g (2.64 lbs)

Security Kensington lock slot

LEDs Multi-color status LEDs

Ambient Operation Temperature -40°C to 65°C
 (-40°F to 149°F)

Storage Temperature -40°C to 70°C
 (-40°F to 158°F)

Humidity 95% RH non-condensing

MTBF 25°C = 661,200 hours
 65°C = 187,375 hours

Mount Options Pole or wall mounting.
 Pole diameter: MIN 30 mm / MAX 75 mm

Certifications (Compliance) Wi-Fi Alliance 802.11 a/b/g/n/ac/ax, FCC, IC, CE, EN 60601-1-2, EN 60950-1, IEC 62368-1 Safety, EN 60601-1-2 Medical, EN 61000-4-2/3/5 Immunity, EN 50121-1 Railway EMC, EN 50121-4 Railway Immunity, IEC 61373 Railway Shock & Vibration, EN 62311 Human Safety/RF Exposure, WEEE & RoHS

XV2-2T Wi-Fi 6 Outdoor Access Point

Management

Note: Some features will be included on subsequent firmware releases.



Cambium Networks XMS leverages intelligent APs with an embedded edge controller to deliver edge services at any network density. XMS management plane is a cloud-first technology with a simple and easy-to-use interface delivering application L7 policy-based control, EasyPass BYOD secure access, and an MSP dashboard with drag-and-drop design.



Cambium Networks cnMaestro™ uses a distributed intelligence architecture with cloud-first management and edge-intelligent APs that self-optimize for the RF environment. cnMaestro delivers a single pane-of-glass management for Cambium broadband fixed wireless, cnMatrix Ethernet switches, enterprise-grade Wi-Fi APs and service provider residential routers.

	XMS Management	cnMaestro Management
Deployment	Xirrus Management System (XMS-Cloud)	cnMaestro Cloud, cnMaestro on-premises, Standalone AP
Services	Deep Packet Inspection (DPI) Application Visibility and Control EasyPass Access Service	Monetized, cloud-managed guest portal with design tools
APIs	RESTful management and statistics API Location API	RESTful management and statistics API Location API Webhooks
Captive Portal	Web page redirect, landing page, redirect to internal or external server, landing page and authentication Client isolation per SSID, per network Client rate limiting per SSID EasyPass, Guest Ambassador Click-through authentication Microsoft Azure and Google G Suite SSO integration	Hosted on cnMaestro or hosted on site AP Redirect to HTTP/RADIUS external portal/authentication Active Directory integration, Google, Facebook, Office 365 integration Data rate, time duration, data throughput limit Server DNS logging, Hotspot 2.0 Credit Card Merchant billing, ePSK, Vouchers
Accounting	RADIUS accounting, load balancing AAA servers, Dynamic Authorization COA, DM	

XV2-2T Wi-Fi 6 Outdoor Access Point

Network Specifications

Note: Some features will be included on subsequent firmware releases.

Operational Modes	Standalone Cloud managed cnMaestro or VM Cloud managed XMS	RF Management	Multimodal RF optimization supporting AutoCell performed in the intelligent edge AP. Out-of-band RF spectrum analysis, radio self test network assurance, RF monitor with chn/noise/interference Data rate pruning and minimum data rates
WLAN	512 clients, 16 SSIDs WPA3, WPA-TKIP, WPA2 AES, 802.1x 802.11w PMF	Network	LACP (802.3ad), TCP connection log, NAT logging firewall, DHCP server, L2, L3 or DNS based access control, VLAN Pooling, RADIUS attribute VID, VLAN per SSID per user
Authentication Encryption	802.1x EAP-SIM/AKA, EAP-PEAP, EAP-TTLS, EAP-TLS MAC authentication to local database or external RADIUS	Band Steer Load Balance	Yes
Scheduled WLAN	On/off by day, week, time of day	Tunnel	L2TP, L2oGRE, PPPoE
Guest Access	See "Captive Portal" section for additional details.	Network and RF Management Tools	Wired and wireless remote packet capture, auto logging, ZapD performance tool, rogue AP detection
Data Limit	Client bitrate/time/throughput limit per SSID	Services	NTP, Syslog, SNMP traps, DNS proxy
Subscriber QoS	WMM		
Fast Roaming	802.11r, OKC, Enhanced roaming		
Mesh	Multi-hop, either band		
Channel Selection	Multimodal channel selection with AutoChannel and AutoBand. Granular control of off-channel scan and channel selection		

Standards

Wi-Fi Protocols	VHT MCS rates, 16/64/256/1024-QAM, 20/40/80 MHz
	TWT, Long OFDM Symbol, Transmit beamforming, Airtime Fairness, AMSDU, AMPDU, RIFS, STBC, LDPC, MIMO Power Save, MRC, BPSK, QPSK, CCK, DSSS, OFDM, OFDMA, UL/DL MU-MIMO
	IEEE 802.11 a/ac/ax/b/d/e/g/h/i/k/n/r/u/v

XV2-2T Wi-Fi 6 Outdoor Access Point



Front View



Back Panel



Bottom View



Side View

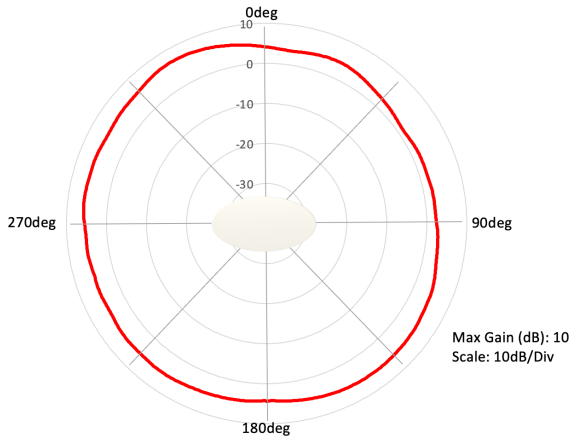


Front View

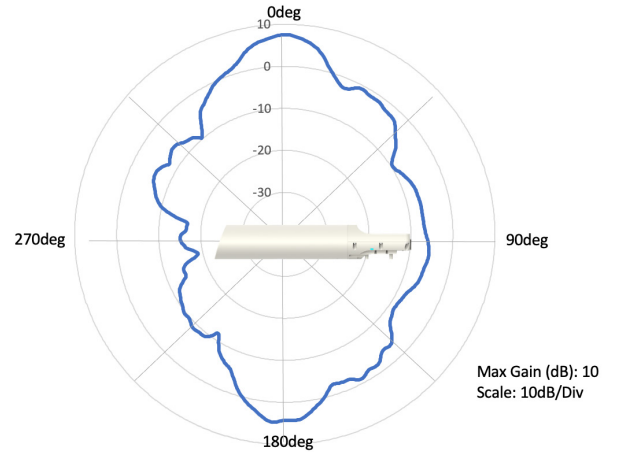
XV2-2T Wi-Fi 6 Outdoor Access Point

Antenna Patterns

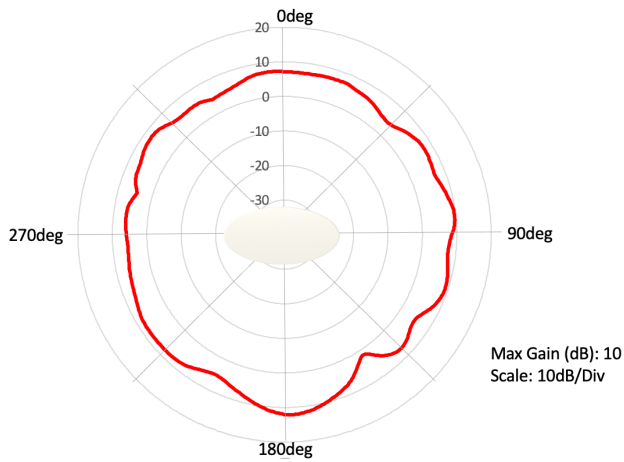
2.4 GHz Azimuth



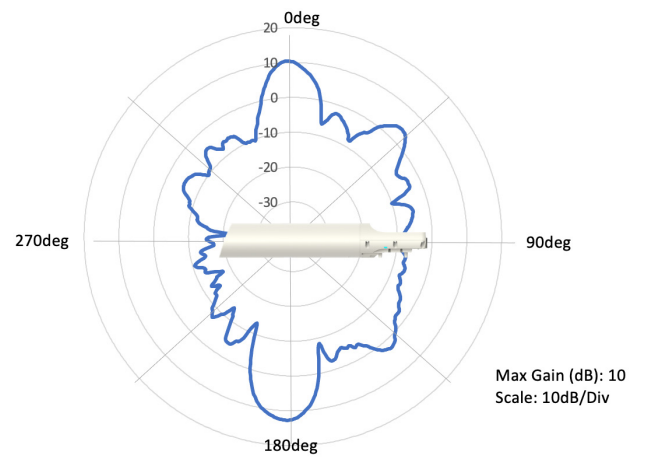
2.4 GHz Elevation



5 GHz Azimuth



5 GHz Elevation



XV2-2T Wi-Fi 6 Outdoor Access Point

Cambium Ordering Information

REG-XV2-2T	Regulatory Model
XV2-2T0XA00-US	XV2-2T Dual-Radio Wi-Fi 6. Outdoor (FCC) 802.11ax 2x2, Omni, US
XV2-2T0XA00-CA	XV2-2T Dual-Radio Wi-Fi 6. Outdoor (IC) 802.11ax 2x2, Omni, CA
XV2-2T0XA00-EU	XV2-2T Dual-Radio Wi-Fi 6. Outdoor (ETSI) 802.11ax 2x2, Omni, EU
XV2-2T0XA00-RW	XV2-2T Dual-Radio Wi-Fi 6. Outdoor 802.11ax 2x2, Omni, RW
MSX-SUB-T3-1	cnMaestro X for Enterprise: Advanced management and includes Cambium Care Pro Support; 1-year term
MSX-SUB-T3-3	cnMaestro X for Enterprise: Advanced management and includes Cambium Care Pro Support; 3-year term
MSX-SUB-T3-5	cnMaestro X for Enterprise: Advanced management and includes Cambium Care Pro Support; 5-year term
XMSC-SUB-2R-1	XMS-Cloud 1-year subscription: 2-radio AP with EasyPass Guest Self-Registration and Guest Ambassador modules and Cambium Care Advanced Support
XMSC-SUB-2R-3	XMS-Cloud 3-year subscription: 2-radio AP with EasyPass Guest Self-Registration and Guest Ambassador modules and Cambium Care Advanced Support
XMSC-SUB-2R-5	XMS-Cloud 5-year subscription: 2-radio AP with EasyPass Guest Self-Registration and Guest Ambassador modules and Cambium Care Advanced Support
EASY-SUB-2R-1	EasyPass 1-year subscription for a 2-radio AP operating with XMS-Cloud or XMS-Enterprise
EASY-SUB-2R-3	EasyPass 3-year subscription for a 2-radio AP operating with XMS-Cloud or XMS-Enterprise
EASY-SUB-2R-5	EasyPass 5-year subscription for a 2-radio AP operating with XMS-Cloud or XMS-Enterprise
CCADV-SUP-XV2-2T-1	Cambium Care Advanced, 1-year support for one XV2-2T Wi-Fi 6 AP. 24x7 TAC support, SW updates, and NBD advance replacement for HW
CCADV-SUP-XV2-2T-3	Cambium Care Advanced, 3-year support for one XV2-2T Wi-Fi 6 AP. 24x7 TAC support, SW updates, and NBD advance replacement for HW
CCADV-SUP-XV2-2T-5	Cambium Care Advanced, 5-year support for one XV2-2T Wi-Fi 6 AP. 24x7 TAC support, SW updates, and NBD advance replacement for HW
CCPRO-SUP-XV2-2T-1	Cambium Care Pro, 1-year support for one XV2-2T Wi-Fi 6 AP. 24x7 TAC support and SW updates
CCPRO-SUP-XV2-2T-3	Cambium Care Pro, 3-year support for one XV2-2T Wi-Fi 6 AP. 24x7 TAC support and SW updates
CCPRO-SUP-XV2-2T-5	Cambium Care Pro, 5-year support for one XV2-2T Wi-Fi 6 AP. 24x7 TAC support and SW updates

XV2-2T Wi-Fi 6 Access Point

Cambium Ordering Information

N000000L142A	PoE, 60W, 56V, 5GbE DC Injector, Indoor, Energy Level 6 Supply, accepts C5 connector
N000900L031A	AC line cord, US Type B, 720mm, C5 connector
N000900L032A	AC line cord, EU Type F angled, 720mm, C5 connector
N000900L033A	AC line cord, UK Type G angled, 720mm, C5 connector
N000900L034A	AC line cord, BR Type N, 720mm, C5 connector
N000900L011A	AC line cord, AU Type I, 720mm, C5 connector
N000900L012A	AC line cord, IN Type D angled, 720mm, C5 connector
N000900L013A	AC line cord, AR Type I, 720mm, C5 connector
N000900L015A	AC line cord, CN Type I, 720mm, C5 connector
N000900L048A	AC line cord, ZA Type M angled, 720mm, C5 connector

LIMITED WARRANTY

Cambium Networks XV2-2T Wi-Fi 6 Access Point includes
a 3-year hardware warranty.

ABOUT CAMBIUM NETWORKS

Cambium Networks empowers millions of people with wireless connectivity worldwide. Its wireless portfolio is used by commercial and government network operators as well as broadband service providers to connect people, places and things. With a single network architecture spanning fixed wireless and Wi-Fi, Cambium Networks enables operators to achieve maximum performance with minimal spectrum. End-to-end cloud management transforms networks into dynamic environments that evolve to meet changing needs with minimal physical human intervention. Cambium Networks empowers a growing ecosystem of partners who design and deliver gigabit wireless solutions that just work.

cambiumnetworks.com

11302021