

Wireless in Higher Education - Top 8 Concerns

An insider perspective of what anyone interested in the Education space should know.

1

Well-Defined Operational Policy Is a Must



- a. Solid policies drive solutions and system design
- b. Otherwise an invitation to chaos eventually manifests in network instability and unhappy users (as disorder and uncertainty sets in).

2

Bigtime BYOD/IoT



- a. Expect requests for everything and anything, but be mindful of the technical and political ramifications of saying yes, or saying no, to each.

3

Not All Buildings Are Created Equal



- a. The differences in building construction (brand new building vs. one built in the 1800s) will bear on your wireless designs and Wi-Fi behavior.

4

Budget Cycles Make You a Futurist



- a. It's not uncommon to expect at least some elements of today's network design to last 8-10 years into the future.
- b. Experience and an open mind go a long way towards helping you build flexibility that needs to last.

5

Swarm!



- a. You never know what a public space will get used for.
- b. While network stability and predictability is among the highest priority, you also have to be able to react and accommodate on the fly to large-scale events.

6

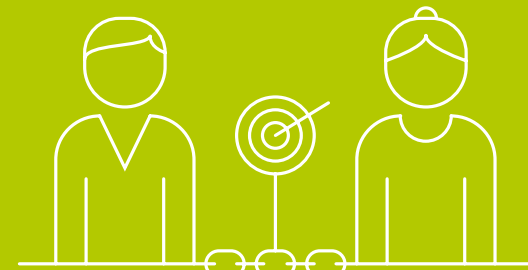
Compliance and Regulations Are Only Getting Stricter in Spots



- a. There is a regulatory undercurrent to many campus operations.
- b. You'll have to decide whether not using Wi-Fi at all in some applications is easier than tap-dancing through the regulatory minefield.

7

The Gift (Curse) of Good (Bad) Managers



- a. Having your own goals and approaches aligned with those in your chain of command helps to keep the wild and crazy at bay.

8

It's a Business, But the Devil is in the Details



- a. Every college and university is a business. There are goals to meet, revenues to take in, and bills to pay, even for non-profits.
- b. While biased, believe the central model (vs. decentralized) runs smoother for all, and is an easier framework to control the networked chaos (that often defines higher ed).

Just remember that the non-technical side of the story drives the operational needs of the technical side, and you'll understand why it's important to consider these eight concerns when it comes to higher education Wi-Fi.