



MAXHUB UC P30

Introducing the MAXHUB UC P30, a cutting-edge 4K dual-eye tracking camera tailored for medium to large meeting spaces. Featuring dual 4K cameras and a range of AI-powered functionalities, including Auto Framing, Speaker Tracking, and Presenter Tracking, it guarantees accurate reproduction of every aspect of your meetings. With support for 4K video streaming, it captures the finest meeting intricacies and offers versatile installation choices.



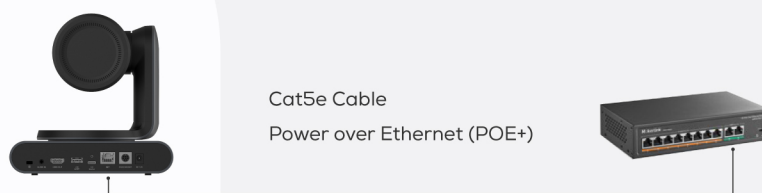
Capture Every Detail

With a dual-eye 4K camera design, the panoramic camera detects every movement in the meeting room, while the PTZ camera ensures accurate capture of attendees at all times.



Plug-and-Play Simplicity

Featuring POE+ technology, this device can be powered using a Cat5e cable. Additionally, it includes an integrated mounting kit for effortless installation. Thanks to its USB plug-and-play setup, it is instantly ready for your meetings.



Installation Option A



Installation Option B

Enhance Zoom Clarity

The UC P30, equipped with a 12x optical zoom and a 90° Field of View (FOV), guarantees clear and high-definition image quality for every participant, even when zoomed in.



AI-Powered Tracking Features

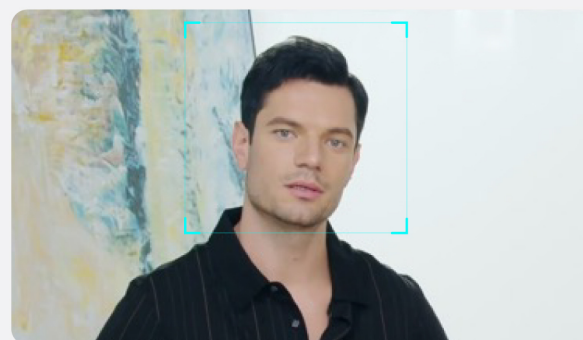


> Auto Framing

Automatically adjusts the camera view to center all participants in a room. This is achieved via real-time detection and tracking of the number and positions of participants.

> Speaker Tracking

Speaker Tracking dynamically follows the active speaker in real-time, elevating engagement with a lifelike meeting experience.



> Presenter Tracking

Presenter Tracking ensures the presenter remains centered by dynamically following them during a presentation, providing remote participants with an immersive experience.



THREE YEAR WARRANTY

Dual Camera

PTZ Camera

Image Sensor	Sony 4K, 8.42M pixel
Video Outputs (USB 3.0)	H.264/MJPEG up to 2160p@30fps, YUV up to 1080p@30fps
Video Outputs (USB 2.0)	H.264/MJPEG up to 1080p@30fps
Video Outputs (HDMI)	H.264/MJPEG up to 2160@30fps
Video Outputs (IP)	H.264/MJPEG up to 2160p@30fps (First Stream), H.264/MJPEG up to 720p@30fps (Second Stream)
Optical Zoom	12x
Digital Zoom	3x
Field of View (FOV)	DFOV 90° / HFOV 80° / VFOV 49.2°
Lens Focal Length	4.8 mm ~ 57.8 mm
Lens Aperture (F#)	1.8 ~ 3.6
Motorized Pan & Tilt	Pan: ±170°, Tilt: ±90°
Preset Number	10 Presets via IR Remote, 128 Presets via RS232
Image Flip and Image Mirror	Yes

Panoramic Camera

8MP, Sony Sensor
120° DFOV
Manual Tilt: ±10°
Electric Privacy Cover
Camera LED Indicator

AI Features

Auto Framing
Speaker Tracking
Presenter Tracking

IO Ports

USB 3.0 Type-C ×1 (Device)
USB 2.0 Type-A ×1 (Host)
Mic in (3.5 mm) ×1
HDMI 1.4 out ×1
RJ45 ×1 (IP Stream, POE+)
RS232 ×1 (VISCA/Pelco-D/Pelco-P Protocol)
Security Lock Slot ×1

What's in the Package

UC P30 ×1
USB Cable C-A (2m / 6.56 ft) ×1
Power Adapter ×1
Remote Control ×1
Mounting Kits ×1
Quick Start Guide ×1

Power

Power Supply	DC in 12V, 2A / POE+ in (Max 25W)
Power Consumption	≤ 22W

Mechanical Specifications

Product Dimension	181 × 151.5 × 178.4 mm / 7.13 × 5.96 × 7.02 inches
Package Dimension (1 unit)	295 × 245 × 243 mm / 11.61 × 9.65 × 9.57 inches
Package Dimension (4 units)	610 × 510 × 265 mm / 24.02 × 20.08 × 10.43 inches
Net Weight (1 unit)	2.3 kg / 5.34 lbs
Gross Weight (1 unit)	3.95 kg / 8.71 lbs
Gross Weight (4 units)	16.9 kg / 37.26 lbs